

LACKETT
20 Ac.
211/582
212/62

SMEDCOR
15 Ac.
211/589

Muench
57.94 Ac.
50/187

Carpenter
15 Ac.
225/145

SMITH
5 Ac.
264/831

EDWARD
7.18 Ac.
250/698

SMITH
8.8 Ac.
48/124

SCHROD
30.43 Ac.
231/518
23/513

PRATERVIEW ADDITION

CRAWFORD
6 Ac.
248/701

FRASER
2.0 Ac.
234/779

JOHNSON
2.0 Ac.
252/677

JOHNSON
1 Ac.
37/39

JOHNSON
2.0 Ac.
38/490

MCHAMARA
14.22 Ac.
228/827

ALPINEWEST ADDITION

Cotter
20 Ac.
188/501

2/3 Cotter
1/3 Burns
6/344
231/218

POSEY
14.22 Ac.
228/827

MCHAMARA
8.4 Ac.

GRAY ADDITION

ROBERTSON
3.8 Ac.
255/381

HEWLEY OIL
31.28 Ac.
27/547

ALPINE WEST ESTATES

ASD
25 Ac.
68/242

Spratt
148/521
10 Ac

Hell
138/401
2 Ac

Hell
110/32
3 Ac

LONG
22.51 Ac.
201/30

MASTIN
2.48 Ac.
14/114

ROBERTS
4.48 Ac.
13/857

VALLEY OIL
1.01 Ac.
239/532

BAILEY-SHORTT
2.0 Ac.
19/518

DESERT PROPERTIES
4.29 Ac.
253/498

LONG
4.11 Ac.
48/813

SELLERS
2.5 Ac.
80/290

Wesloch
1.78 Ac.
280/138

ALLEN
1.38 Ac.
249/48

PENACREE

Tr "A"
7.33 Ac.
ASD

Tr 13
3.69 Ac.
ASD

VALLEY DISTRIBUTING
2.42 Ac.
218/532

VALLEY OIL
1.01 Ac.
239/532

DESERT PROPERTIES
4.29 Ac.
253/498

SMITH
2.08 Ac.
54/478

MUTHILL
2.13 Ac.
31/573

QUEEN
4.30 Ac.
1/137

QUEEN
4.30 Ac.
1/137

RODRIGUEZ
2.0 Ac.
203/71

MUTHILL
2.25 Ac.
46/758

TEXAS DESIGN
1.37 Ac.

HENDERSON ADDITION

COLLINS ADDITION

METTA MARKS ORIENT ADDITION

METTA MARKS ORIENT ADDITION

METTA MARKS ORIENT ADDITION

30' EASMT

30' EASMT

15' EASMT

30' ROAD EASMT

LINE 100' DRAIN DC

LINE 100' DRAIN DC

30' ROAD EASMT

Peachtree Circle

DUAL RUN STREET

14' CITY OF LOS ANGELES EASEMENT

Esque Pass Ave.

Uvalde Ave.

Highway 50

30' EASMT

30' EASMT

30' EASMT

30' EASMT

30' EASMT

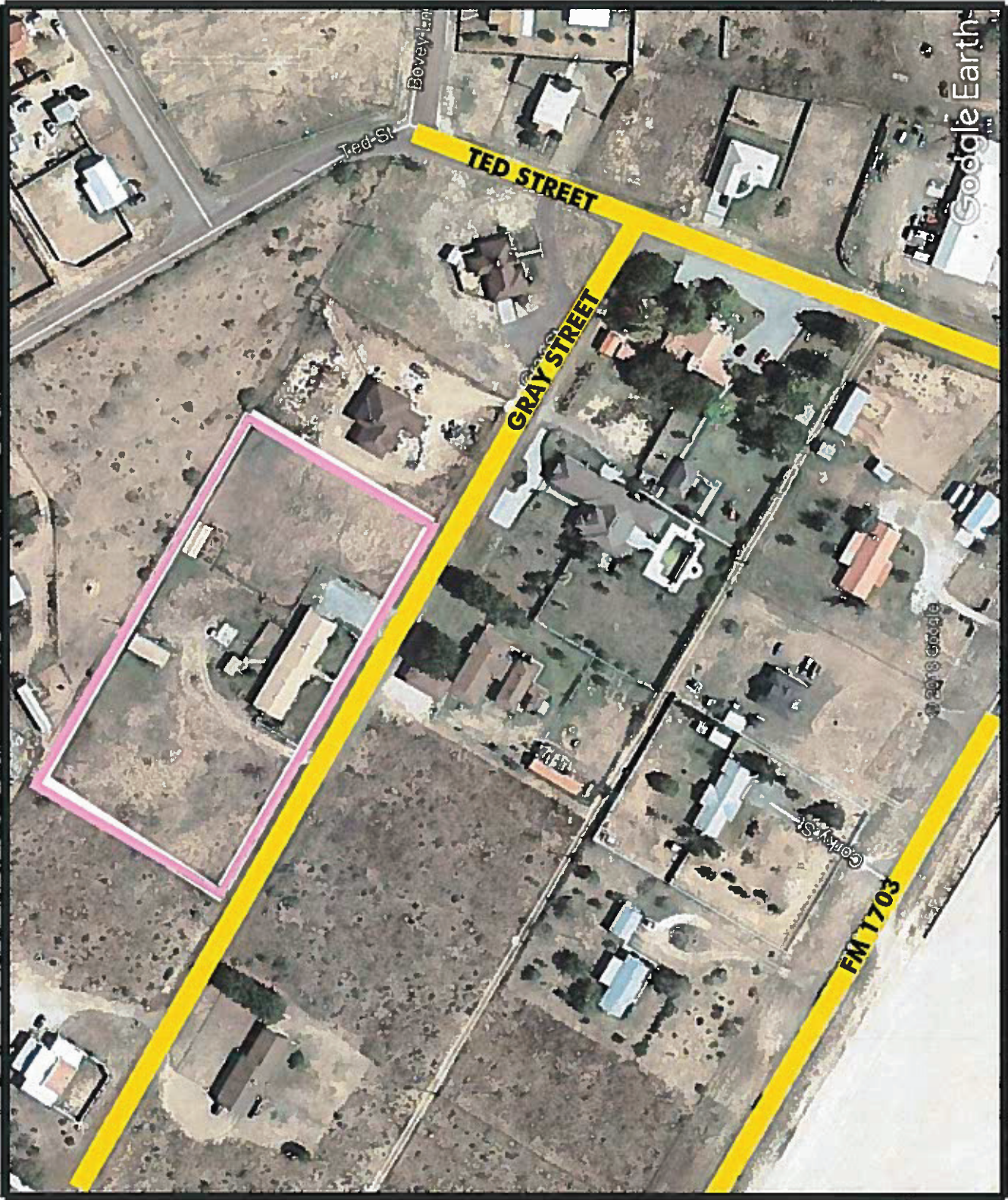
30' EASMT

30' EASMT

30' EASMT

This 18.7' strip may or may not exist

POWER
85/19
1.28 A



Ted St
Bovey Ln

TED STREET

GRAY STREET

FM 1703

Cory St

Google Earth