

BEARINGS ARE RECORD BASED ON MONUMENTS FOUND AS PER A SURVEY OF A 2.01 ACRE TRACT OF LAND OUT OF SUR 43, BLK 9, SURVEYED BY STEVEN F. WALKER, R.P.L.S. 4425, DATED FEB. 28, 2005 SURVEYED: FEB. 5 - 16, 2007

A METES AND BOUNDS DESCRIPTION ACCOMPANIES THIS PLAT

○ SET 5/8-INCH REBAR WITH CAP MARKED 'SPANAGEL RPLS 4761'

PLAT of a survey of a tract out of a 21.85 acre tract out of 163 at Pg. 132, Deed Record: Block 9, G.H. & S.A. Ry. Co. S. County, Texas



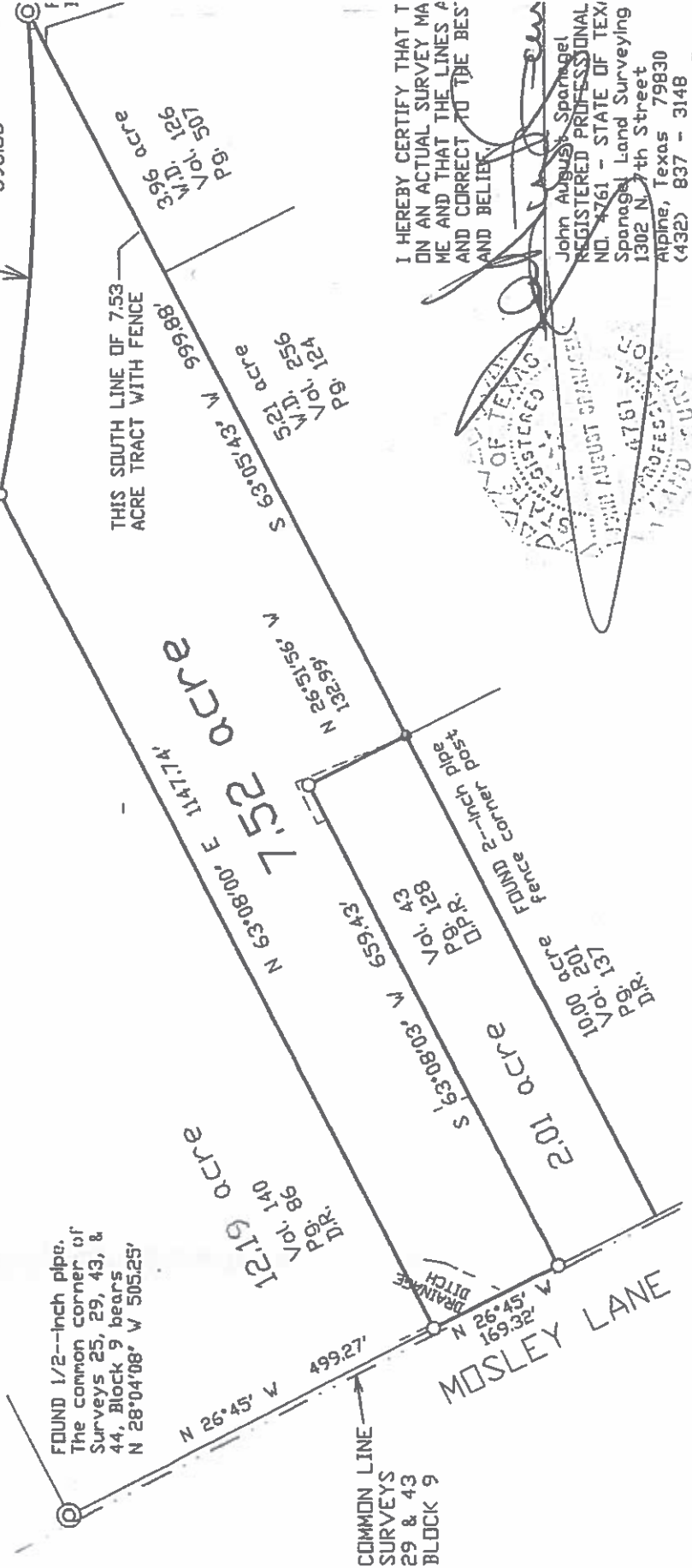
FENCE LINE



CURVE DATA  
 $\Delta = 16^\circ 57' 28''$   
 $R = 2012.77'$   
 $T = 300.05'$   
 $L = 595.72'$   
 CHD. BRG. =  
 $S 86^\circ 19' 24'' E$   
 593.56'

UNION PACIFIC RAILROAD R-D-W

FOUND 1/2--inch pipe. The common corner of Surveys 25, 29, 43, & 44, Block 9 bears N 28°04'08" W 505.25'



I HEREBY CERTIFY THAT THIS IS AN ACTUAL SURVEY MADE BY ME AND THAT THE LINES ARE CORRECT TO THE BEST OF MY KNOWLEDGE AND BELIEF.

John August Spanagel  
 REGISTERED PROFESSIONAL SURVEYOR  
 NO. 4761 - STATE OF TEXAS  
 Spanagel Land Surveying  
 1302 N. 7th Street  
 Alpine, Texas 79830  
 (432) 837 - 3148  
 DATE: MARCH 15, 2007

