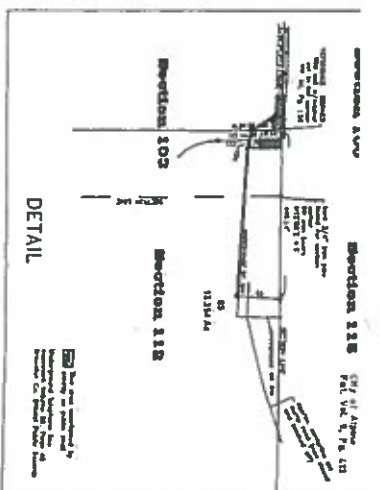
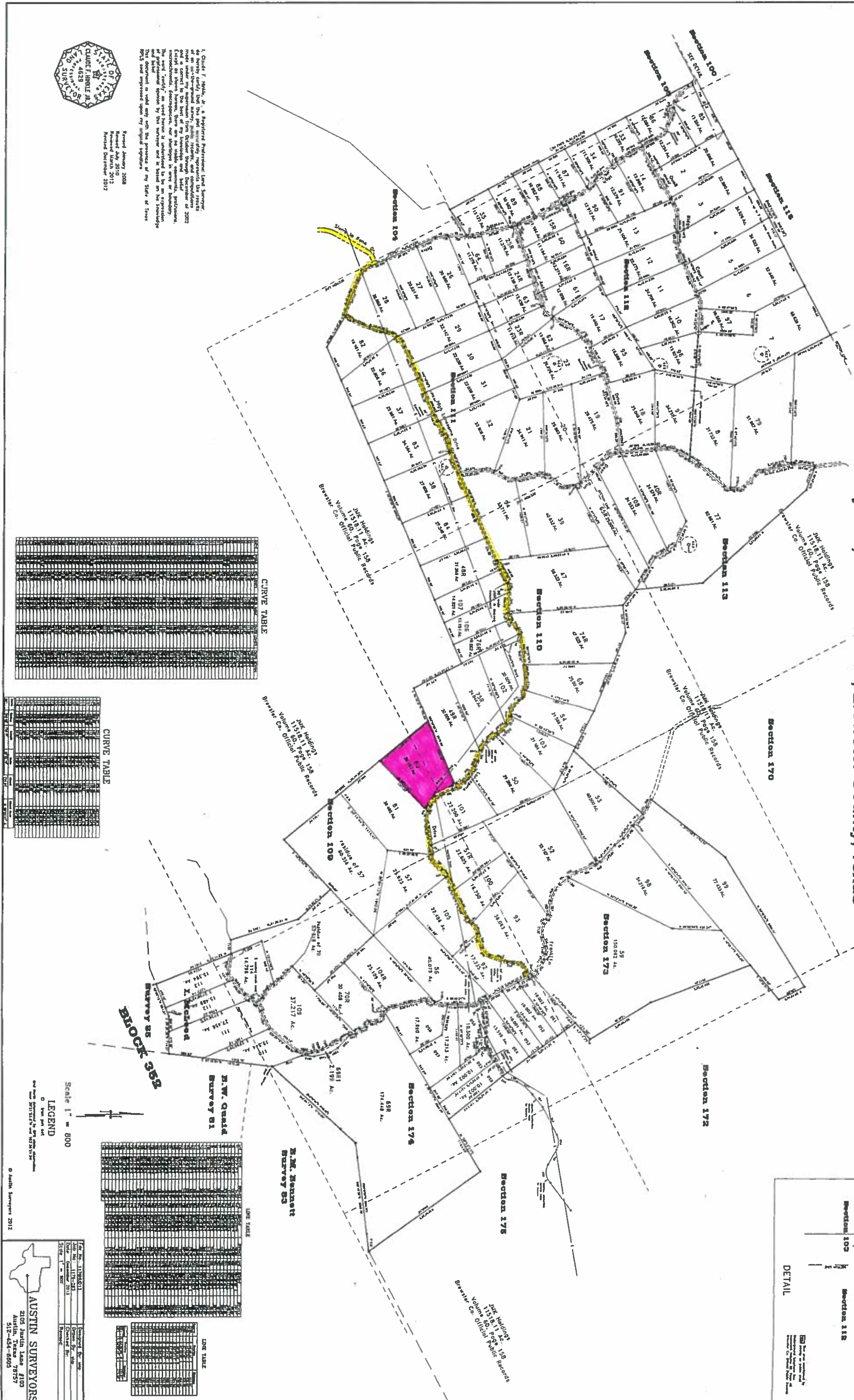


Sheridan 1st Phase 1

Survey plat showing 111 tracts of land in Sections 103, 109, 110, 111, 112, 113, 172, 173, 174, and 175, Block 9, G.H. & S.A. Railway Co. Surveys, and the Isabella McLeod Survey #85, in Block 352, Brewster County, Texas



CURVE TABLE

Stationing	Curve Description	Radius (ft)	Chord (ft)	Area (sq ft)
100+00.00 to 100+02.00	C1	200	19.94	200.00
100+02.00 to 100+04.00	C1	200	19.94	200.00
100+04.00 to 100+06.00	C1	200	19.94	200.00
100+06.00 to 100+08.00	C1	200	19.94	200.00
100+08.00 to 100+10.00	C1	200	19.94	200.00

CURVE TABLE

Stationing	Curve Description	Radius (ft)	Chord (ft)	Area (sq ft)
100+10.00 to 100+12.00	C1	200	19.94	200.00
100+12.00 to 100+14.00	C1	200	19.94	200.00
100+14.00 to 100+16.00	C1	200	19.94	200.00
100+16.00 to 100+18.00	C1	200	19.94	200.00
100+18.00 to 100+20.00	C1	200	19.94	200.00

CURVE TABLE

Stationing	Curve Description	Radius (ft)	Chord (ft)	Area (sq ft)
100+20.00 to 100+22.00	C1	200	19.94	200.00
100+22.00 to 100+24.00	C1	200	19.94	200.00
100+24.00 to 100+26.00	C1	200	19.94	200.00
100+26.00 to 100+28.00	C1	200	19.94	200.00
100+28.00 to 100+30.00	C1	200	19.94	200.00

CURVE TABLE

Stationing	Curve Description	Radius (ft)	Chord (ft)	Area (sq ft)
100+30.00 to 100+32.00	C1	200	19.94	200.00
100+32.00 to 100+34.00	C1	200	19.94	200.00
100+34.00 to 100+36.00	C1	200	19.94	200.00
100+36.00 to 100+38.00	C1	200	19.94	200.00
100+38.00 to 100+40.00	C1	200	19.94	200.00

Scale 1" = 800'

LEGEND
 D 1/2" = 100' (1/4" = 50')

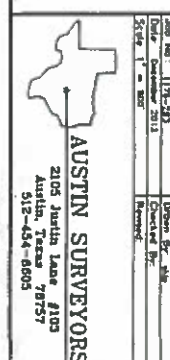
E.W. Quaid Survey 51

E.M. Bennett Survey 53

Block 352

Block 9

AUSTIN SURVEYORS
 2105 Austin Lane #105
 Austin, Texas 78757
 512-444-8833



I, Claude F. Jirak, Jr., a Registered Professional Land Surveyor in the State of Texas, do hereby certify that this plat accurately represents the results of an independent survey, made, reduced, and computed under my personal supervision, and that the same are correct in the best of my knowledge and belief. In testimony whereof, I have hereunto set my hand and the seal of my office at Austin, Texas, this 15th day of July, 2012.

Revised January 2008
 Revised July 2011
 Revised March 2012
 Revised December 2012